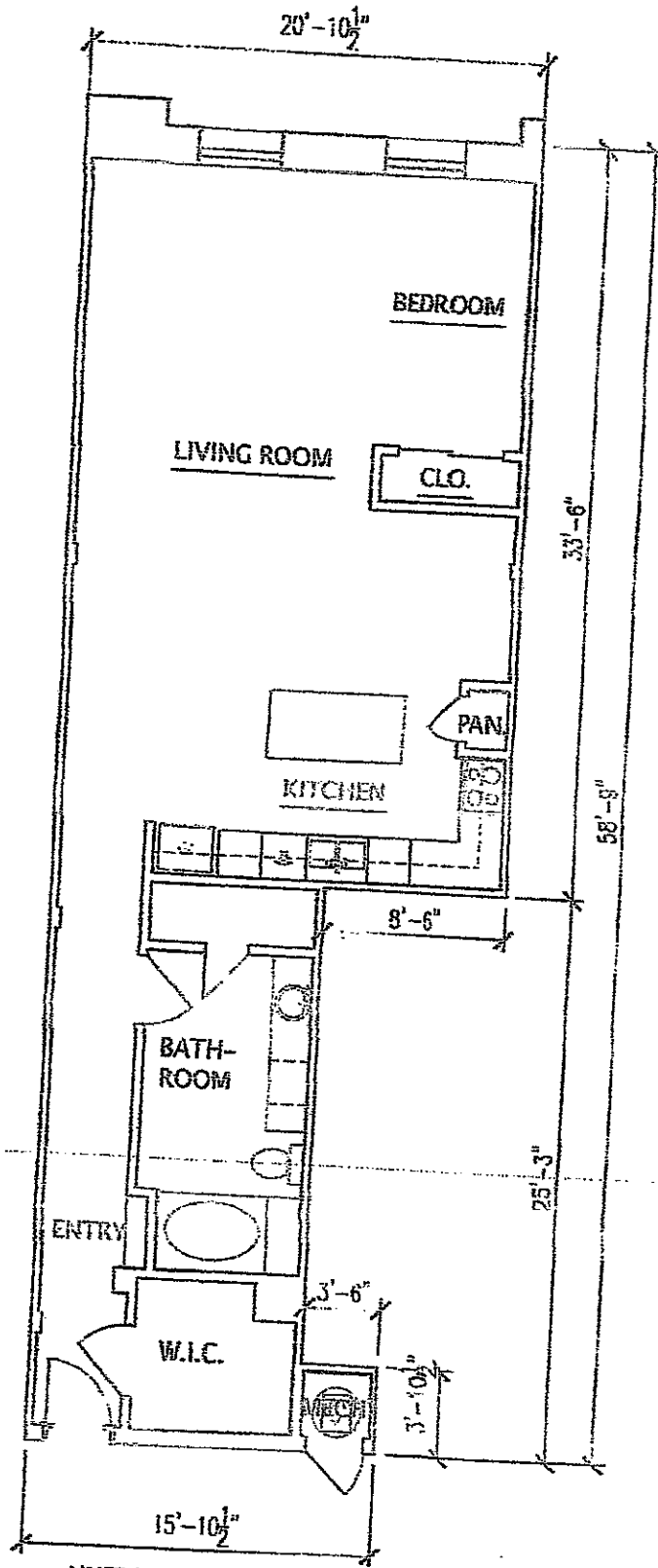


UNIT 201
 APPROX. 1,254.0 SQ. FT.

RAY ENGINEERING, INC. <small>REGISTERED PROFESSIONAL ENGINEERS</small>	The Strand Lofts, A Condominium 2400 Mechanic St, Galveston, TX <small>RAY ENGINEERING, INC. 8885 STEVE REYNOLDS, BUILDING "A", NORFOLK, VA 23009, 770.928.1182</small>	APPROVED BY: Steven V. Ray, PE Texas License 87875	A-12 <small>DATE: 07/25/14 DRAWN BY: [illegible] CHECKED BY: [illegible]</small>
	1 BEDROOM, 1 BATH		



UNIT 203
 APPROX. 1,025.40 SQ. FT.



The Strand Lofts, A Condominium
 2400 Mechanic St, Galveston, TX

1 BEDROOM, 1 BATH

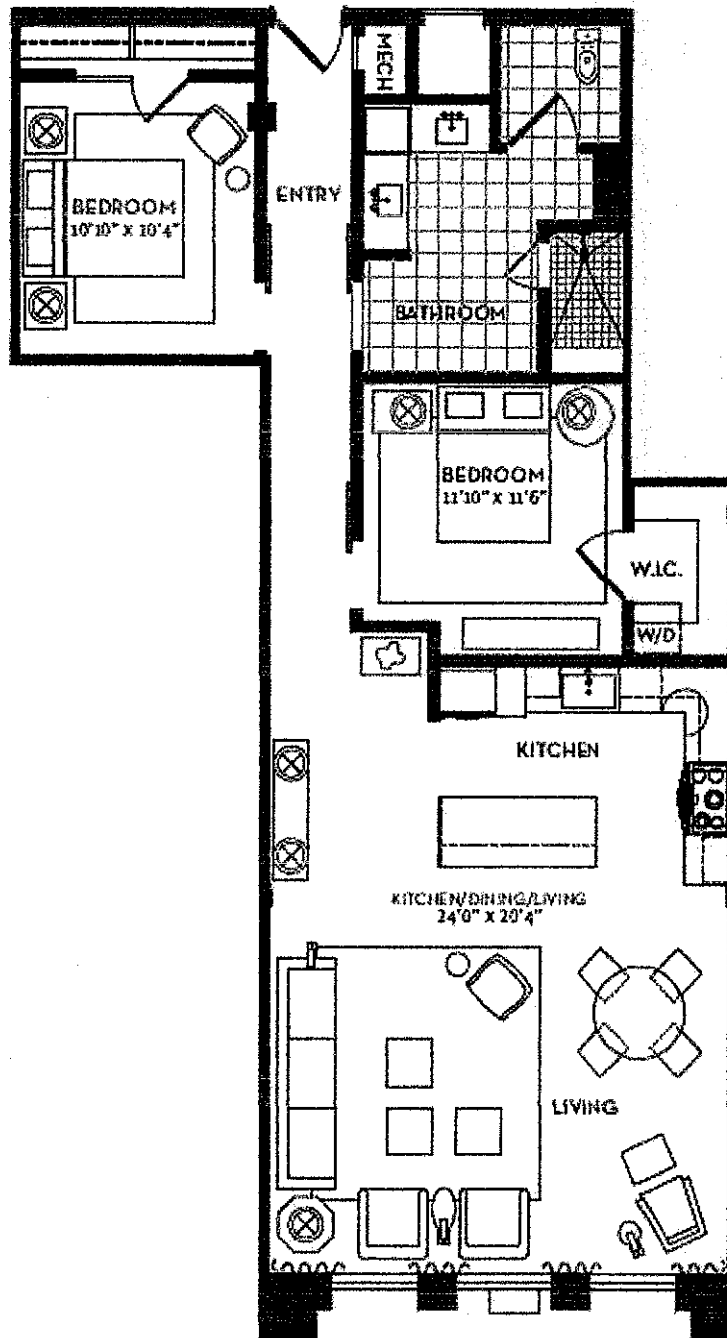
APPROVED BY
 Steven W. Ray, PE
 Texas License #87873

DATE	07/25/14
PROJECT	STRAND LOFTS
PREPARED BY	STEVEN W. RAY

A 14

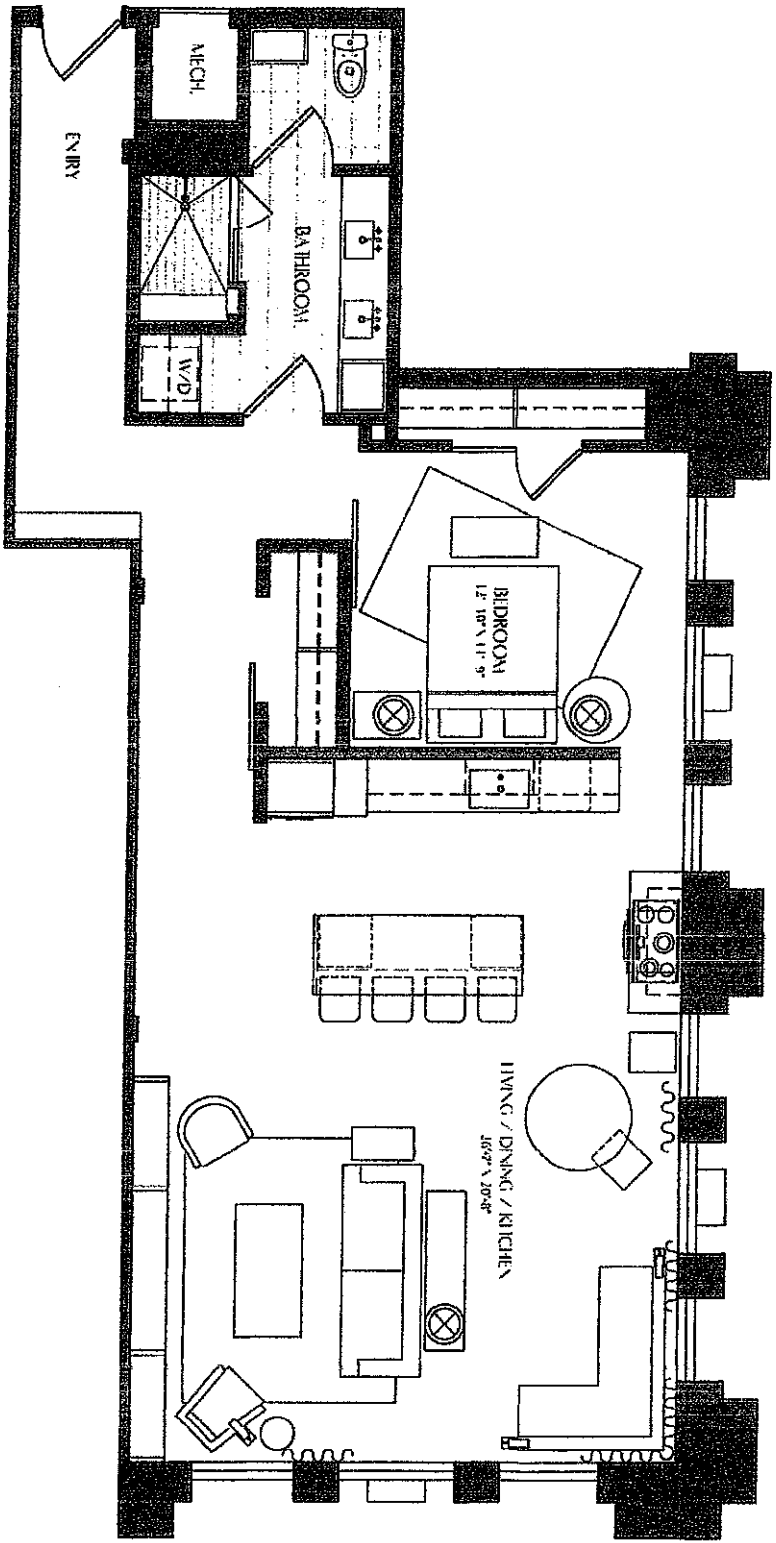
THE
STRAND
HISTORIC LOFTS
18 90

Loft 304

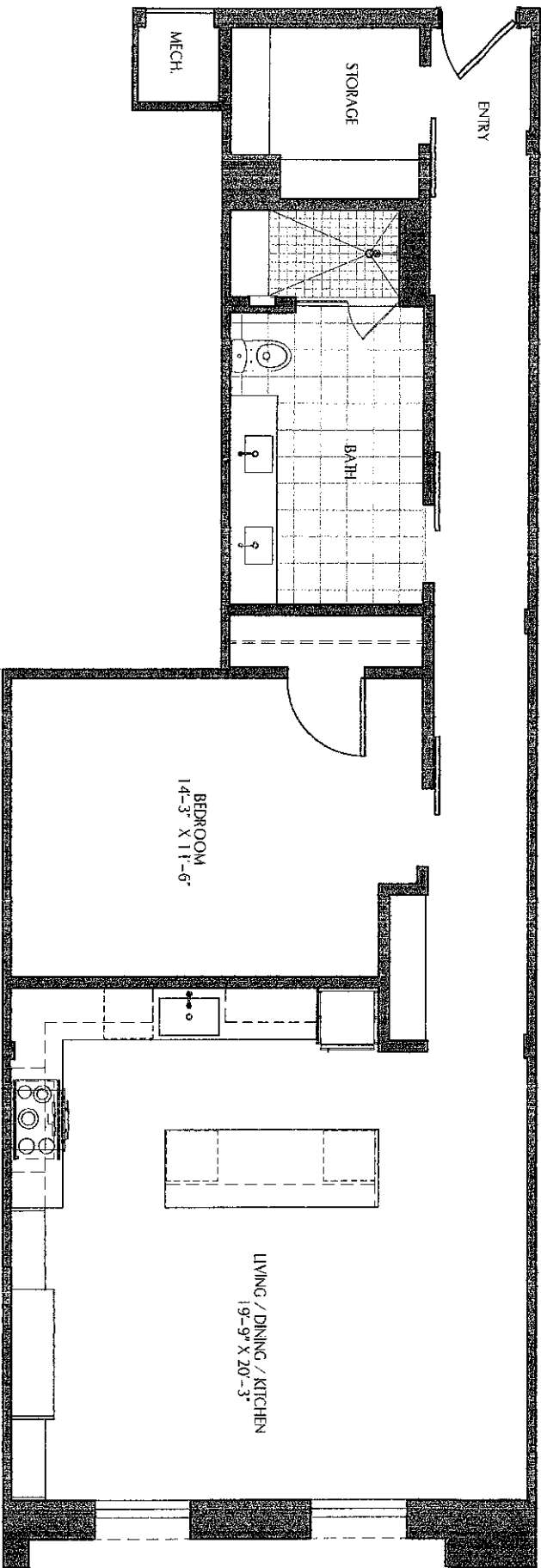


2 BEDROOM
1 BATH
1,250 SQ. FT.

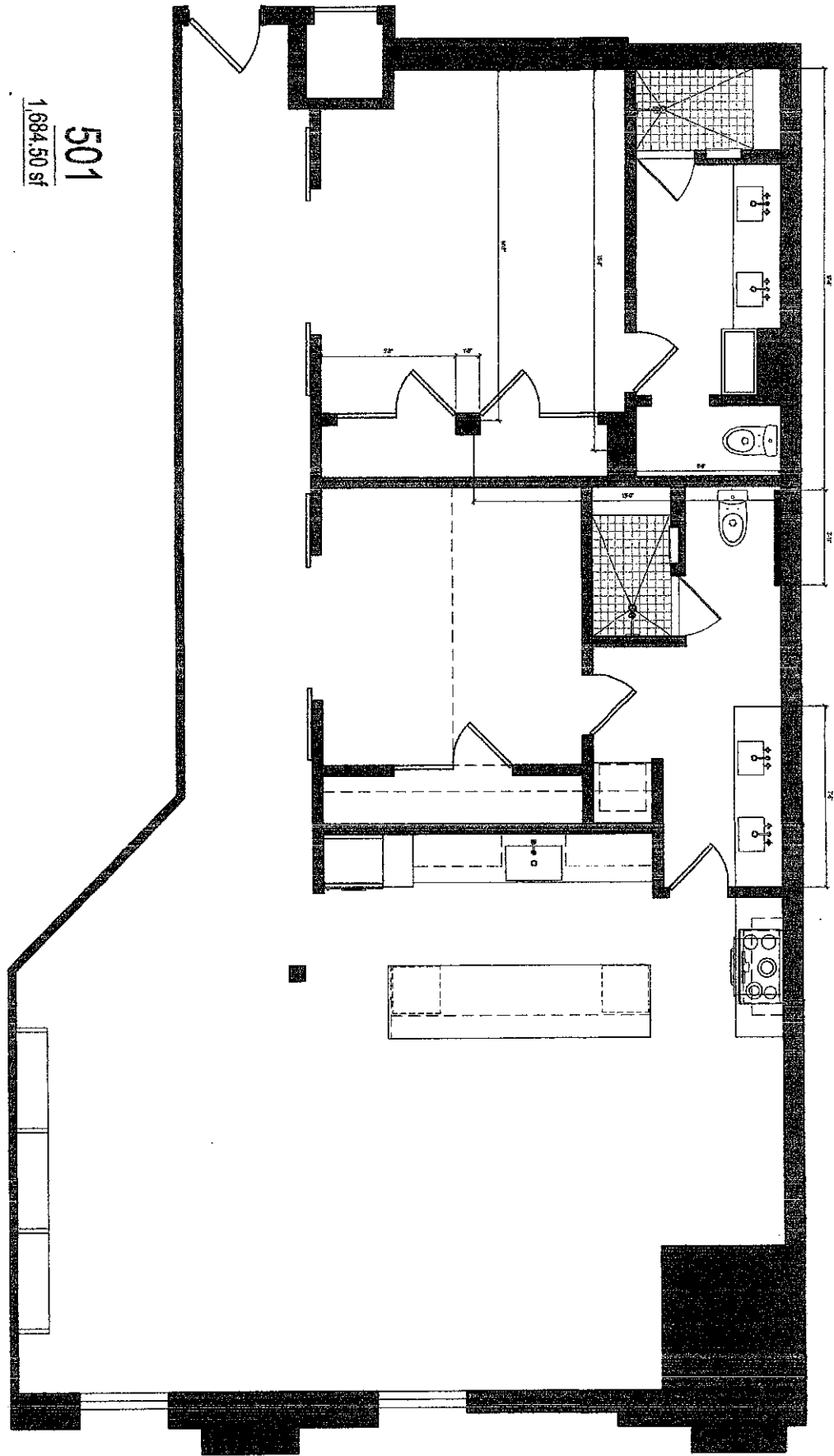




#306 \$408
STRAND LOFTS
ONE BEDROOM, ONE BATH
UNIT 306 - 1228 SQ. FT.
1-7-88, A/E

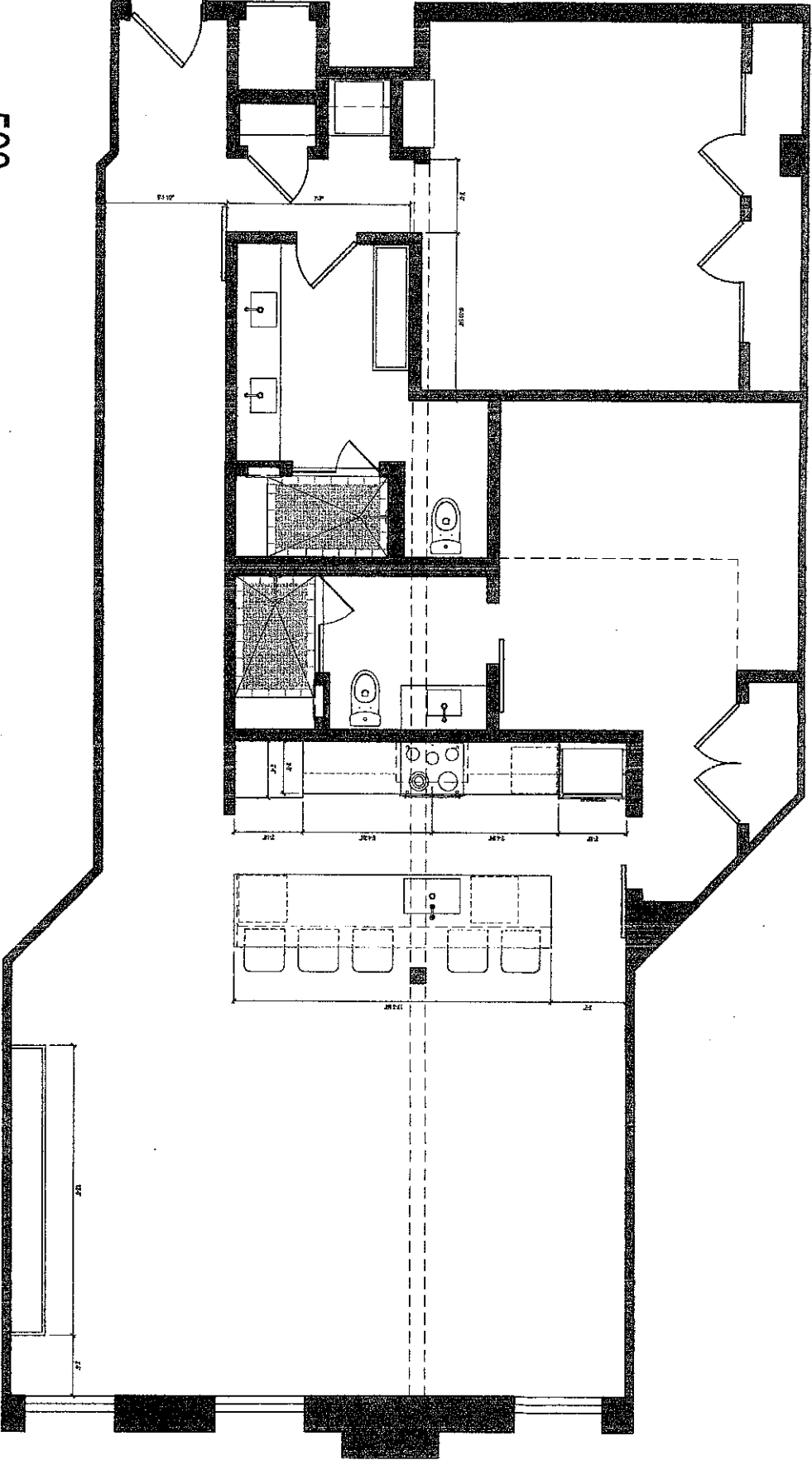


STRAND LOFTS
 ONE BEDROOM, ONE BATH
 UNIT 403 - 930 SQ.FT.
 1/4" SCALE



501

1,684.50 sf



503

1,653.70 sf